

Goldville

Palm Bay Series

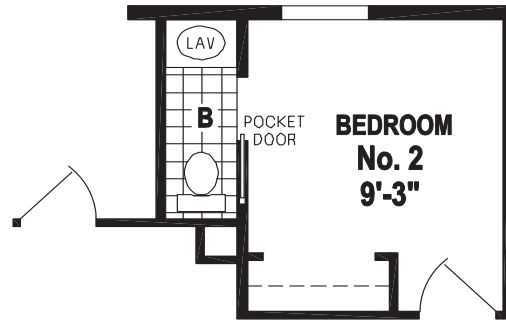
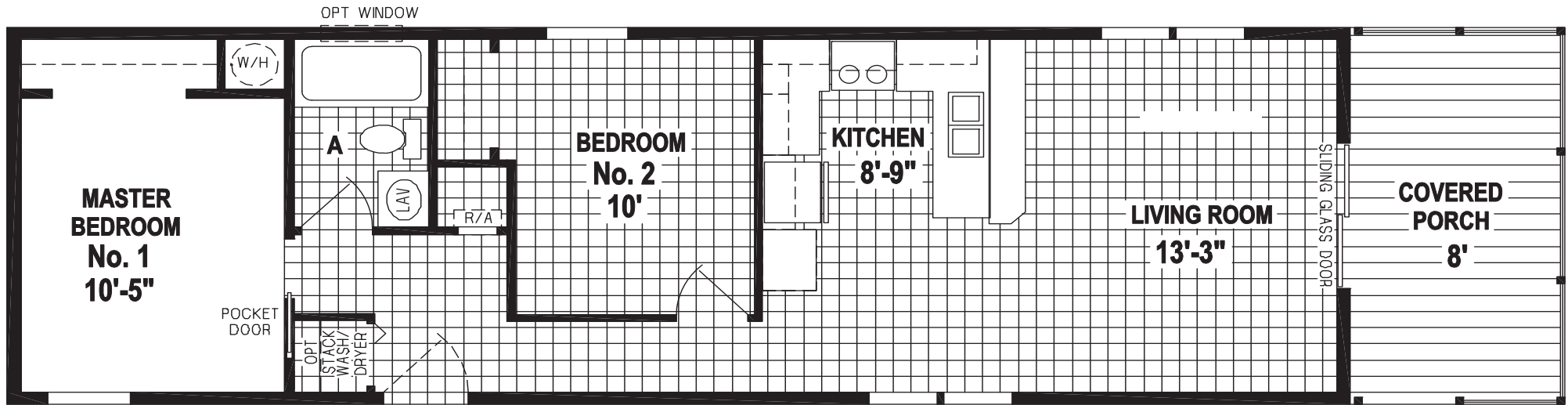


Factory Expo

"Factory Direct Pricing" HOME CENTERS

2 Bedroom, 1 Bath
Approx. 786 Sq. Ft.

Last Updated: 1-21-19



OPTION 1/2 BATH



I authorize Factory Expo to build my house, per this plan.

X _____

Customer Signature/Date

1-800-554-4813

www.FloridaFactoryDirect.com

1-800-554-4813

www.FloridaFactoryDirect.com

Important: Due to our policy of constant improvement, all information in our brochures may vary from actual home. The right is reserved to make changes at any time, without notice or obligation, in colors, materials, specifications, processes, and models. All dimensions and square footage calculations are nominal and approximate figures. Please check with your sales person for specific and current information.