

# Kirkfair

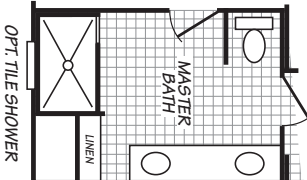
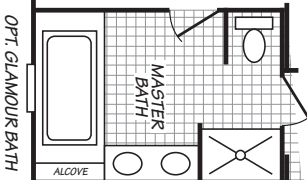
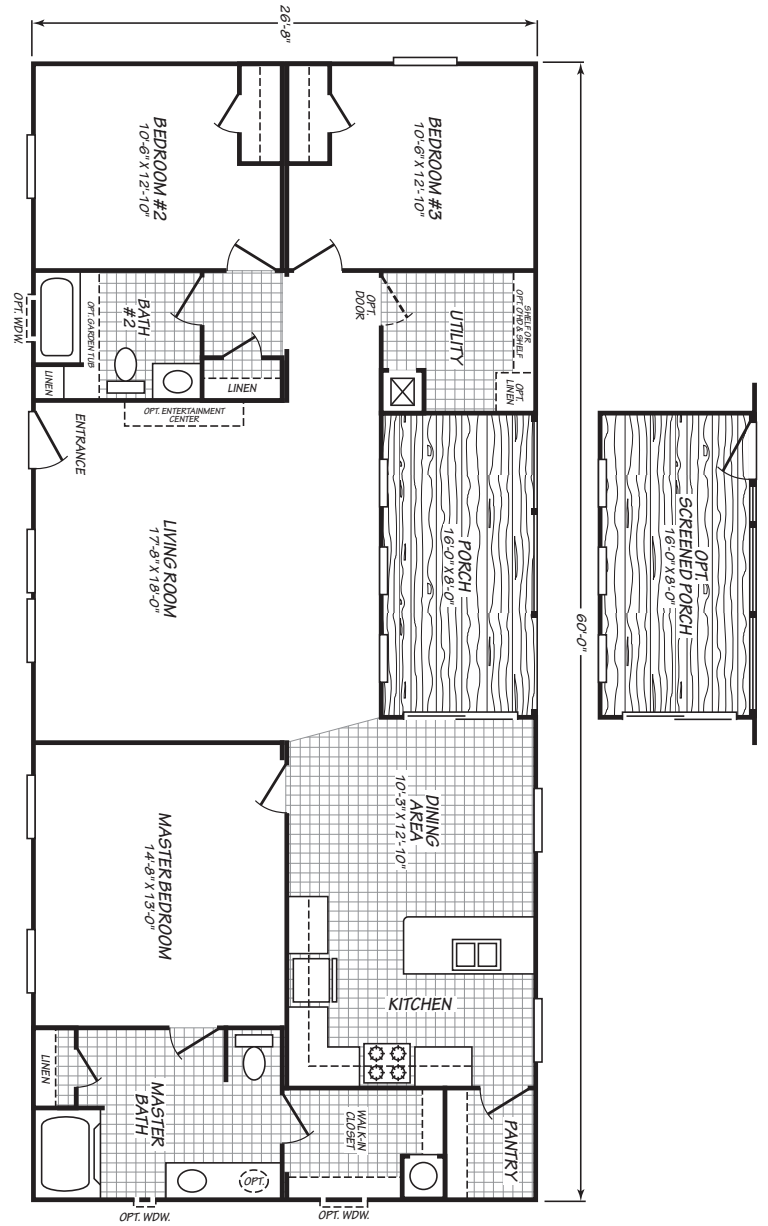
Weston Series



3 Bedrooms, 2 Baths  
Approx. 1,599 Sq. Ft.

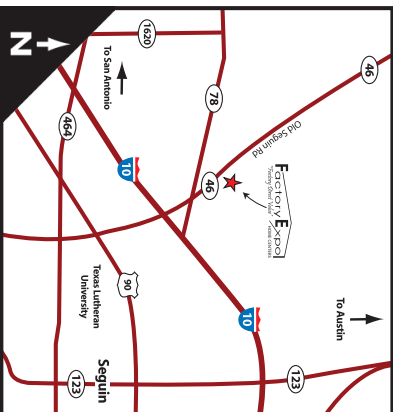
Last Updated: 12-19-19

Important: Due to our policy of continual improvement, all information in our brochures may vary from actual home. The right is reserved to make changes at any time, without notice or obligation, in colors, materials, specifications, processes, and models. All dimensions and square footage calculations are nominal and approximate figures. Please check with your local sales associate for specific and current information.



**Factory Expo**  
"Factory Direct Value"  
HOME CENTERS

2075 State Highway 46, North, Seguin, TX 78155



For Detailed Directions See Map On Our Website

1-800-807-8536